



Group Overview



Group History



Leaping	2007 – Current	2007. 01	YANCHENG DONGKOOK, CHINA established (YANCHENG DONGKOOK AUTO PARTS)	2013. 03	COSMOLINK acquired	 
		2007. 08	KBI JAPAN founded	04	MB SEONGSAN (Name changed to KB METAL) GERMANY ICT acquired (Name changed to KDK AUTOMOTIVE)	
		2008. 02	KB REMICON founded (U.A.E.)	09	DONGKOOK IND. ASAN FACTORY #2 constructed	
		09	YOUNGIL NON-FERROUS METALS acquired	2014. 05	SEOKMUN ENERGY acquired	
		2009. 12	MODINE KOREA acquired (Name changed to KB AUTOTECH)	08	YOUNGIL NON-FERROUS METALS (Name changed to KB ALLOY)	
		2010. 01	EJOEUN JUNGANG HOSPITAL acquired (Name changed to KB JANGYU HOSPITAL)	2016. 01	VIETNAM SH VINA CABLE acquired (Name changed to COSMILINK VIETNAM)	
		12	KB MEDICAL FOUNDATION founded	2017. 01	DONGKOOK MEXICO founded	
		2011. 12	NOKSAN HANMAEUM HOSPITAL acquired (Name changed to KB NOKSAN HOSPITAL)	04	KB INTERNATIONAL GROUP (Name changed to KBI GROUP)	
		2012. 01	KB GUMI HOSPITAL founded	2019. 01	KBI Yusangtech acquired	
		12	KB AUTOTECH INDIA BRANCH founded	2020.	E-Commerce business start	
Changes	1996 – 2006	1996. 05	HANJIN PLASTIC IND. acquired (Automobile components manufacturing)	1998. 11	DONGKOOK IND. ASAN FACTORY #1 constructed	
		11	KUKIN IND. founded	2001. 08	DONGYANG STEEL PIPE acquired	
The 2nd Foundation	1987 – 1995	1987. 03	Business separation KABUL GROUP / KB INTERNATIONAL GROUP KB SYNTHETICS founded	1990. 09	DONGKOOK IND. listed on stock exchange	
				1994. 05	DONGWOON IND. acquired (Name changed to KB TECH)	
Growth	1975 – 1986	1977. 01	KABUL BUILDING constructed	1978. 11	KBI CONSTRUCTION founded	
Foundation	1955 – 1974	1955. 12	DONGKOOK IND. founded	1974. 05	KABUL founded	
		1956. 07	SHINHAN SILK Partnership Company founded			

Group Affiliate Status



Automobile Parts

KBI DONGKOOK IND.
KDK AUTOMOTIVE
KB AUTOTECH
KBI ACETECH



Material / Industrial Supplies

DONGYANG STEEL PIPE
KBI METAL
KBI COSMOLINK
KBI COSMOLINK VINA CABLE
KBI ALLOY



Construction / Real Estate

KBI CONSTRUCTION
KB REMICON
KB INTERNATIONAL
KBI JAPAN



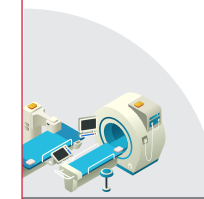
Textile / Paper

KB SYNTHETICS
KBI YUSANG TECH



Energy / Environment

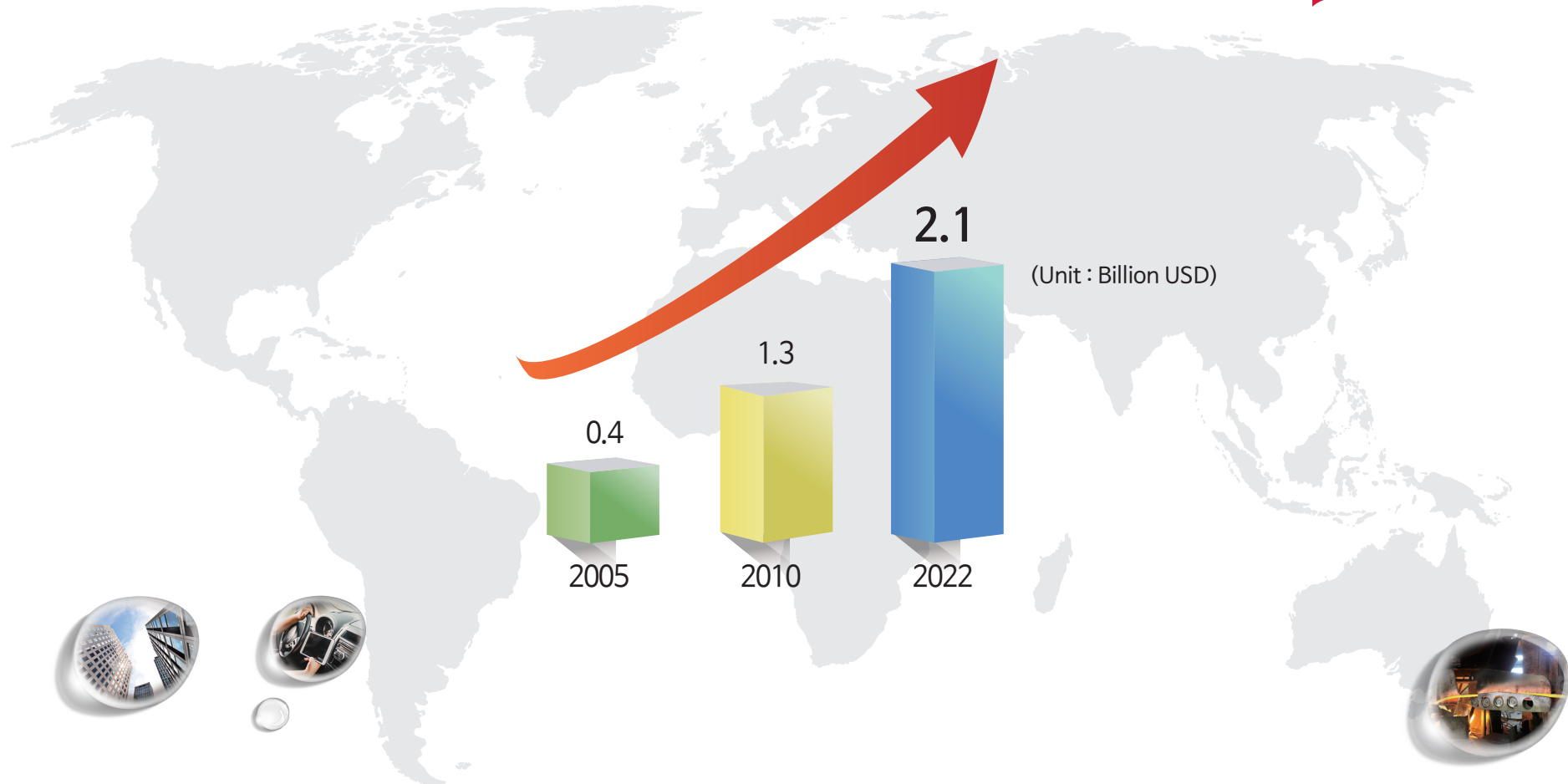
KBI KUKIN IND.
KBI TECH
SEOKMUN ENERGY
KBI ULTRA
DAEGU ECO



Medical / E-Commerce

KB MEDICAL FOUNDATION
- KB JANGYU HOSPITAL
- KB NOKSAN HOSPITAL
- KB GUMI HOSPITAL
HEUREUX
- Handbag Department
Online Department

Group Revenue



Sector	Automobile Parts	Material Industrial Supplies	Construction Real Estate	Environment / Energy / Medical / Textile	Total
FY 2022 Revenue Million USD (Revenue portion %)	770 (37%)	1,000 (48%)	50(3%)	250 (12%)	2,070 (100%)

KBI DONGKOOK IND.

www.dongkook.net

Year of Establishment 1955
Revenue (unit : Million USD) 360
Employees 1,000



Manufacturer of automotive interior & exterior components, air conditioning and lamp-related parts

Domestic Sites

ASAN FACTORY #1



Main products : GLOVE BOX, LUGGAGE BOARD

ASAN FACTORY #2



Main products : CRASH PAD MAIN, CONSOLE

ULSAN FACTORY



Main products : CRASH PAD MAIN, GLOVE BOX

GYEONGJU FACTORY



Main products : LUGGAGE BOARD

Overseas Sites

CHINA YANCHENG FACTORY



Main products : CRASH PAD MAIN, LAMP

MEXICO HUSKERIA FACTORY



Main products : CRASH PAD MAIN, LAMP

Major Clients



KBI DONGKOOK IND.

Interior Components



ASSIST HANDLE



CRASH PAD MAIN



CLUSTER FACIA



NOZZLE DEFROSTER



CRASH PAD LWR



CONSOLE



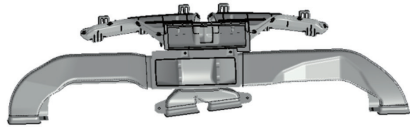
GLOVE BOX



Exterior Components



CONNECTION DUCT



COWL TOP COVER



CARRIER



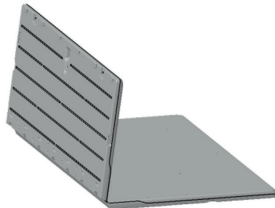
NOZZLE DEFROSTER



LAMP



LUGGAGE BOARD



RESERVOIR



KDK AUTOMOTIVE

www.kdkautomotive.com

Year of Establishment 1935

Revenue (unit : Million USD) 140

Employees 800



Manufacturer of automotive plastic exterior and interior components



Sites

GERMANY WACHTERSBACH FACTORY



Mail Products : CONSOLE, PILLAR

CZECH REPUBLIC TACHOV FACTORY



Mail Products : CONSOLE, PILLAR

SPAIN BORJA FACTORY



Mail Products : TRIM, DECO

Main Products

CONSOLE



Major Clients



KB AUTOTECH

www.kbautotech.com

Year of Establishment 1962

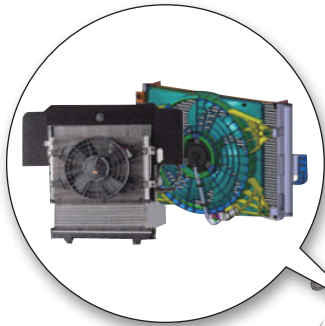
Revenue (unit : Million USD) 200

Employees 480

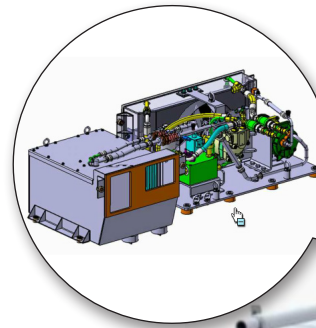
Sites : ASAN (KOREA), CHENNAI (INDIA)

Manufacturer of vehicle air conditioning and heat exchanging systems

Main Products



Automobile air conditioning system



Military vehicles (Tank, Armored car) air conditioning system



Train air conditioning system



Major Clients



Mercedes-Benz

KBI ACETECH

Year of Establishment 2013
Revenue (unit : Million USD) 30
Employees 160
Site : ASAN (KOREA)



Manufacturer of automotive interior and exterior components and the tools

Main Products



Major Client

HYUNDAI
MOBIS

DONGYANG STEEL PIPE

www.dysp.co.kr

Year of Establishment 1973

Revenue (unit : Million USD) 170

Employees 220

Global manufacturer of large diameter steel pipes (water, oil & gas and structural pipes, coated pipes)

Sites

SEOUL OFFICE (KB BUILDING)



CHEONAN FACTORY



CHUNGJU FACTORY



Main Products

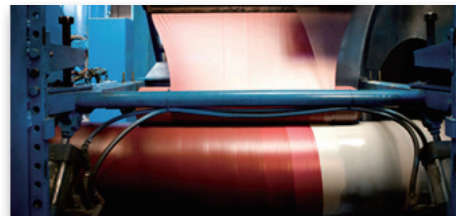
Line pipe for oil and gas



Heavy wall pipe for offshore, construction



Extruded polyethylene 3-layer coated pipes



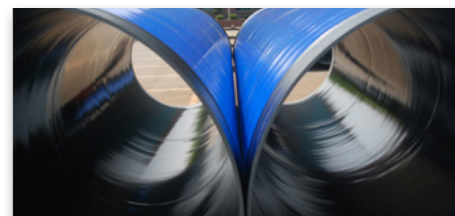
Various pipe lines



Pipe pile for foundation



Coated water pipe



Major Clients



KBI METAL

www.kabulmetal.co.kr

Year of Establishment 1985

Revenue (unit : Million USD) 540

Employees 200

Sites : SEOUL, EUMSEONG, DAEGU

Manufacturer of copper rods (ICR) for electric wires & automotive electronic components

Metal Division

Main Products

JCR Scrap (60,000t/year)



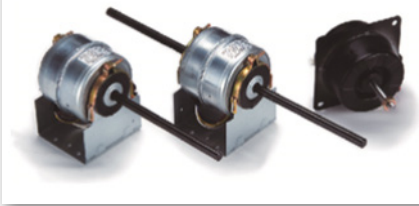
Major Clients



Electric Components Division

Main Products

AC MOTOR



STARTER MOTOR



VENTILATION BOOSTING MODULE



ALTERNATOR



SEAT VENTILATION HEATING MODULE



MOTOR CORE



Major Clients



BorgWarner



두산인프라코어



KBI COSMOLINK

www.kbicosmolink.co.kr

Year of Establishment 1965

Revenue (unit : Million USD) 130

Employees 120

Manufacturer of power, telecommunication and machinery line cables

Sites

SEOUL OFFICE (KB BUILDING)



OKCHEON FACTORY



Major Clients



KEPCO

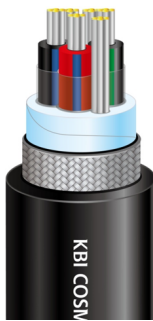
SAMSUNG

POSCO
E&C

Main Products



THHN / THWN-2
(UL83)



TC-ER Cable
(UL 1277)



Low Inductance Cable
(UL 758)



Tree Wire



MV URD Cable
(UL 1072)



ACSR



3-layer Insulated Wire (TIW)
(UL 2353, EIS)

KBI COSMOLINK VINA

www.cosmolinkcable.com.vn

Year of Establishment 2004

Revenue (unit : Million USD) 31

Employees 130

Manufacturer of power, telecommunication and machinery line cables

Sites

Hanoi Office



Vinh Yen Factory (VINH PHUC)



Major Clients

SAMSUNG



Main Products

Building Wires



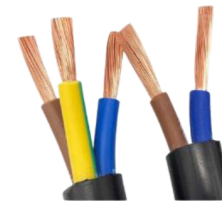
Bare Copper Wires



Overhead Line Wires



Power Cord



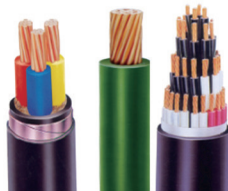
TIW-M



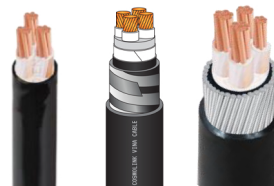
ACSR Cables



Control Cables



Power Cables



Fire Resistant Cables



Instrument Cables



KBI ALLOY

www.kbialloy.com

Year of Establishment 1963

Revenue (unit : Million USD) 40

Employees 60

Sites : SEOUL, ASAN

Manufacturer of specific purpose copper alloy materials and parts

Main Products

Spot Resistance Welding Alloys



Rod Wire for Cap-tip for Automobile Spot-welding and Co2-Tip for Welding Big Ship



Billet and Bare Wire for Aircraft Wire



Major Clients



KBI CONSTRUCTION

www.kbconst.co.kr

Year of Establishment 1978

Revenue (unit : Million USD) 45

Employees 60

Civil engineering, contract work and plant construction company

Main Business

Roads and highways



West Suwon-Uiwang road

Railroad



KTX 11-1 section Establishment of roadbed

Residences



Godeok station KB Myungga City

Educational facilities



Dogok library

Business facilities



Gasan KB Great valley

Ports



Pohang Yeongil bay breakwater

Plants



Gyeongju sewage treatment facility

Overseas



Laos GMS road improvement

KB REMICON

www.kbremcon.ae

Year of Establishment 2008

Revenue (unit : Million USD) 13

Employees 35

Manufacture of ready-mix concrete



Site

AJMAN PLANT (U.A.E.)



SHARJAH PLANT (U.A.E.)



Main Business



KB INTERNATIONAL

Year of Establishment 1970
Revenue (unit : Million USD) 10
Employees 25

Domestic real estate investment & development, E-Commerce

Main Business

Real estate lease and building management



KB International Group's HQ (KB building)



Gunpo plant

HEUREUX by Stella (Handbag manufacturing, Wholesale and Retail / www.heureux.kr)



HEUREUX means happiness in French. We are an ethical fashion brand that strives to bring happiness to the human race as well as animals.

Online business department (E-Commerce / www.kbimall.co.kr)



Bringing Value To Customers' Lifestyle. The company sells different products of fashion, accessories, and household through various distribution channels.

KBI JAPAN

www.kbijapan.com

Year of Establishment 2007

Revenue (unit : Million USD) 125

Employees 200

Real estate investment & development, and hospitality management in Japan

Main Business

Real estate lease & building management



Sanco building (Japan office)

Shimbashi building

Golf Resorts



Yabuki Golf Resorts



Souen Golf Resorts

MYODO METAL



Niigata Prefecture, Manufactures and sells cold-rolled stainless steel

RABO KIGOSHI



Manufacturing and selling shoes in JAPAN (raboki-webstore.com)

KB SYNTHETICS

www.kbsyn.co.kr

Year of Establishment 1990

Revenue (unit : Million USD) 45

Employees 15

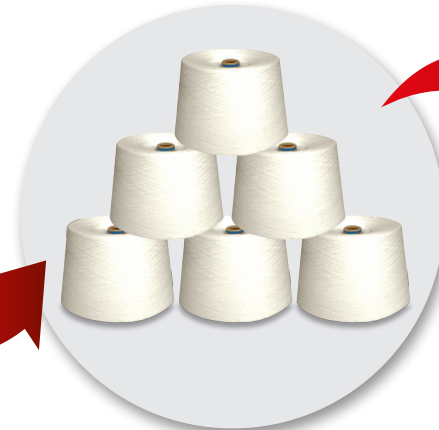
Site : SEOUL

Distributor of textile yarns

Main Products



- POLY-RAYON
- POLY
- RAYON
- VISCOSE FILAMENT
- POLY-COTTON



Major Clients



삼성물산



CHONBANG



일신방직

KBI YUSANGTECH

www.yusangtech.com

Year of Establishment 2000

Revenue (unit : Million USD) 7

Employees 50



Manufacturer specializing in paper food containers

Sites

SEOUL OFFICE (KB BUILDING)



BUSAN FACTORY



Major Clients



Main Products



Paper Containers

As a microwave oven-only insulating double container that can be used for cooking conveniently, it is suitable for hot food containers such as ramen and soup.



Beverage Paper Cup

It is a product optimized for takeout/franchise products using high-quality raw paper for food and beverage.

KBI TECH

www.ikbtech.com

Year of Establishment 1982

Revenue (unit : Million USD) 20

Employees 48

Incinerator & supplier of renewable energy

Site

INCHEON PLANT (HQ)



Main Business

Waste Hauling Business



- Sector : Collection and transportation of waste
- Coverage area : Nationwide



Incineration & Steam Generation



- Sector : Interim disposal
Sales of heat & steam
- Volume : Incineration - 150t/day
Steam - 200,000t/yr
- Item : General and hazardous industrial waste

Major Clients

coway
EnTech

청라에너지주식회사

경인양행
KISCO
CREATING COLORS AND CHEMICAL SOLUTIONS

(주)유성화학
YOUSUNG CHEMICAL CO.

KBI KUKIN IND.

www.kukin.co.kr

Year of Establishment 1996

Revenue (unit : Million USD) 55

Employees 75



Largest domestic incinerator and landfill operator & supplier of renewable energy

Sites

GUMI PLANT



GUNSAN PLANT



Main Business

Incineration & Steam Generation



- Sector : Interim disposal
Sales of heat & steam
- Volume : Incineration - 200t/day
Steam - 250,000t/yr
- Item : General and hazardous industrial waste

Landfill



- Sector : Final disposal
- Capacity : 6.9 mil. m³
- Item : General and hazardous industrial waste

Major Clients

HYOSUNG

삼성코닝정밀유리 **SAMSUNG**

LG LG디스플레이

Youngdo Velvet

SK 실트론

SEOKMUN ENERGY

www.smep.co.kr

Year of Establishment 2013

Revenue (unit : Million USD) 50

Employees 58

Supplier of biomass combined heat and power

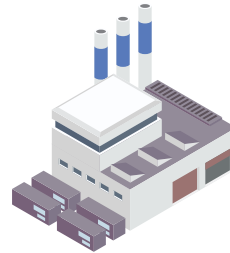
Site

DANGJIN



Electricity generation capacity : 38.9 MW

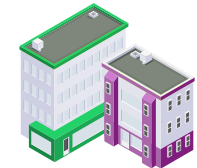
Main Business



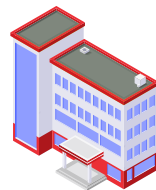
Dangjin Thermal Power Plant

Heat supply
(Since 2018)

Heat and steam sales
(84% of total load)



Industrial complex



Korea Power Exchange

Electricity sales
(Since 2016)



SEOKMUN combined
heat & power plant

Heat sales
(16% of total load)



Residential complex

Recycled fuel (Wood chips)



Major Clients



KBI ULTRA

Year of Establishment 2003
Revenue (unit : Million USD) 5
Employees 17

Recycling food waste to produce animal feed and biodiesel raw materials

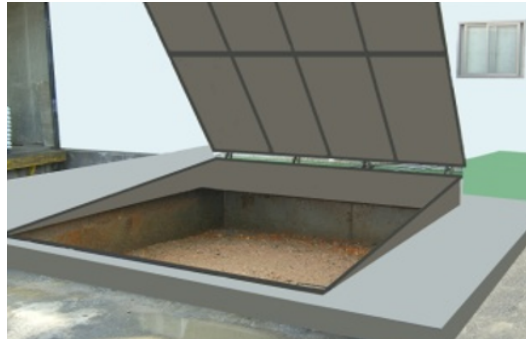
Sites

ANSAN PLANT



Main Business

Food waste Input



Crushing and automatic screening



Dehydration



Shipment



DAEGU ECO

Year of Establishment 2017
Revenue (unit : Million USD) 8
Employees 32

Sewage sludge dry fueling facility

Sites

SINCHEON PLANT (Capa : 230t / day)



SEOBU PLANT (Capa : 115t / day)



Main Business

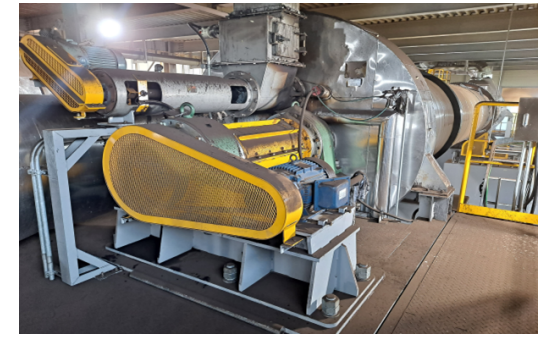
Bring in and supply



Get rid of the odor



Dry



Supply of heat



KB HOSPITAL

www.kbhospital.com

Revenue (unit : Million USD) 55
Employees 450



Healthcare provider of the local communities

Sites

One and only general hospital in Jangyu



KB JANGYU HOSPITAL

Establishment 2006

167-13, Jangyu-ro, Jangyu-myeon, Gimhae-si,
Gyeongsangnam-do, Korea

Provider of healthcare and specialized checkups
for the nearby industrial complex



KB NOKSAN HOSPITAL

Establishment 2011

24-8, Noksan Industrial Complex 321-ro,
Gangseo-gu, Busan, Korea

Rehabilitation center for acute nervous system
disorders



KB GUMI HOSPITAL

Establishment 2012

280-3, 3 Industrial Complex 1-ro, Gumi-si,
Gyeongsangbuk-do, Korea



Official contractor of medical
hotline with 4 major
university hospitals in Korea



SNUH
서울대학교병원

SAMSUNG
삼성서울병원



세브란스병원
SEVERANCE HOSPITAL

Global Network

